

There are (nuclear) shelters that do not disturb residents and are resistant to missile and drone attacks.

Travel freely for 24 hours on the Galaxy Express

wooden artificial island

Runway on wooden artificial island

wooden artificial island

Our top priority is to ensure that the members have fun

Various training grounds, sports facilities, Restaurant area, commercial facilities, hotels, etc. (Family and lovers can also stay for a short period of time)

Runway on wooden artificial island

desert island
Various missiles, fighter jets, drones, ammunition storage & food storage Nuclear shelter function

Even if the ammunition depot is blown up by operatives, the rest of the structure will be safe.

underground base

Equipped with wave power generation, seafood farming, and CO2 reduction factory.

wooden artificial island

Possible to counterattack after receiving (nuclear) attack

Galaxy Railway vehicle (the entire surrounding area of the wooden artificial island): Also used for accommodation

wooden artificial island

Runway on wooden artificial island

Strong against earthquakes, tsunamis, and typhoons

To check the Galaxy Railway, click on "Galaxy Railway Night" on the Garden Field website.

Fighter jet/missile launcher

desert island

Galaxy Express/boat entrance/exit

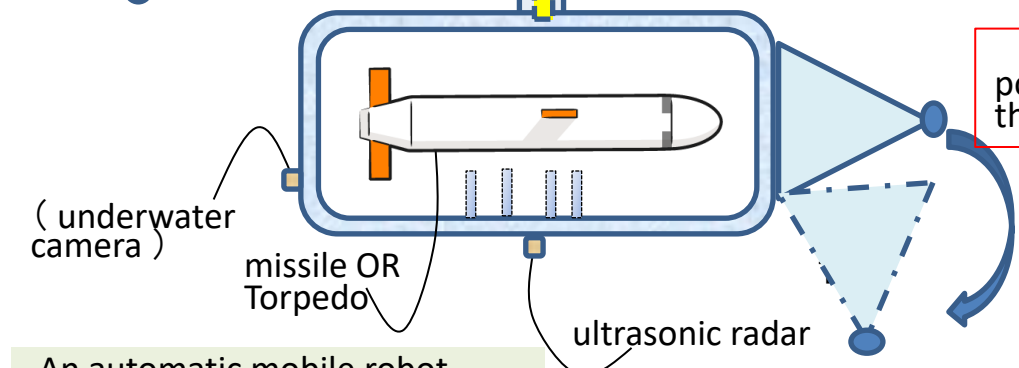
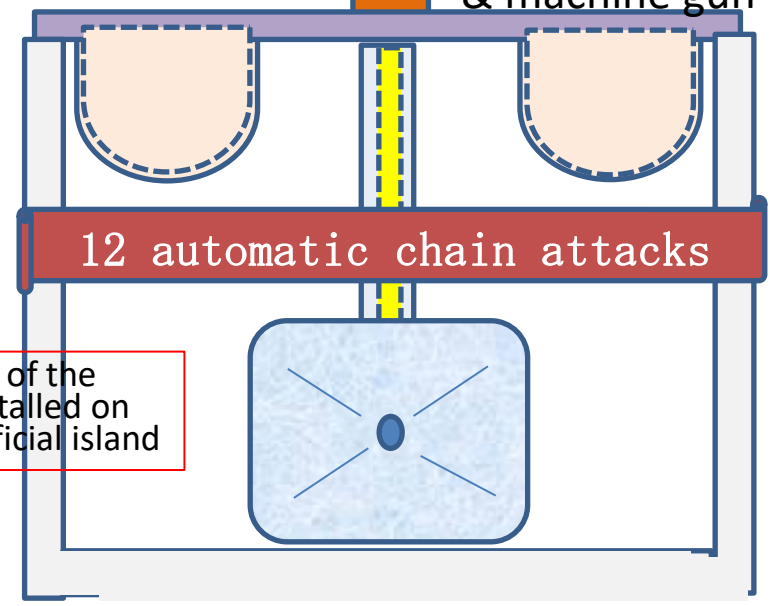
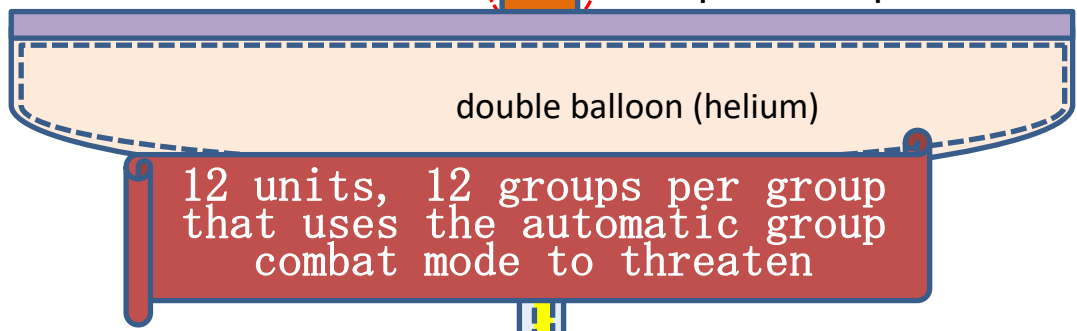
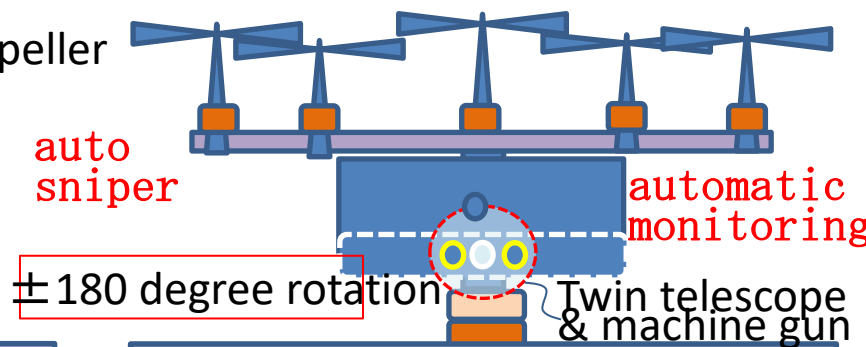
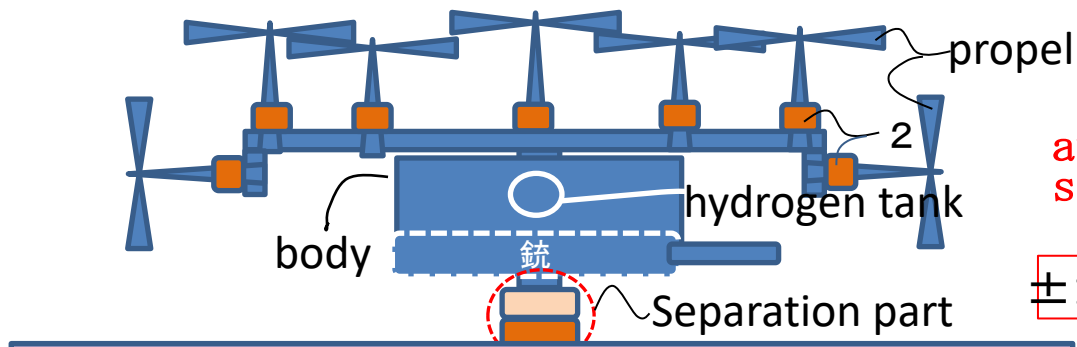
Store as much as possible. Things that must be exposed, such as runways, should be made easier to rebuild even if they are destroyed.

The war in Ukraine suggested a new type of base.

Fighter planes/ammunition depots...if exposed, they become targets for attack.

Weapons other than drones and missiles are of little use.

Hydrogen-fueled automatic drone weapon capable of 24-hour navigation with balloons = Unmanned Defense = BD



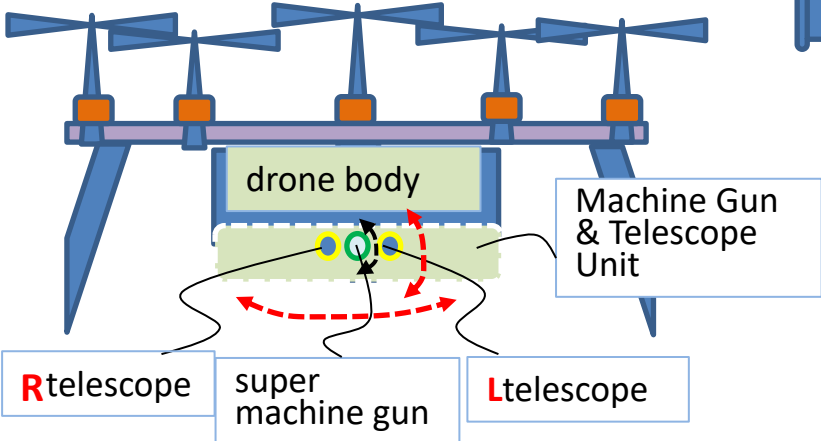
An automatic mobile robot comes to the port and replaces the hydrogen tank. (On artificial islands, hydrogen is generated from tree-shaped and wind-powered electricity, compressed into a tank, and filled.)

(When it rises to the surface of the water, it opens and fires a missile)
automatic refueling

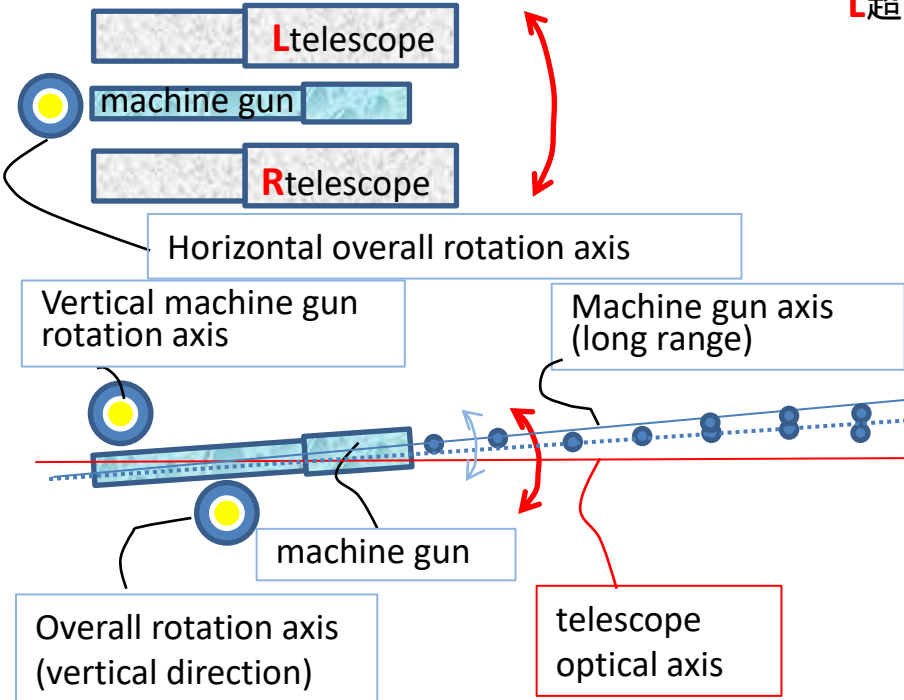
Two-pair super-telescope (super-sensitive color camera) and machine gun: Use binocular super telescopes to check where the target has been hit, including at night, and AI will issue fine-tuning instructions while firing the machine gun to hit the target.

automatic sniper system

An AI-equipped autonomous drone equipped with an ultra-long-range (more than 5km) machine gun with a mechanism that allows fine and precise adjustment of the muzzle direction, and two super-telescopes (=ultra-long focal length). Then, shooting considering the distance to the target, elevation difference, wind and rain, temperature, etc., confirming where it hit with the super telescope, making fine adjustments to the target, and shooting again. Automatic sniper system that can always hit.



(Plan view)

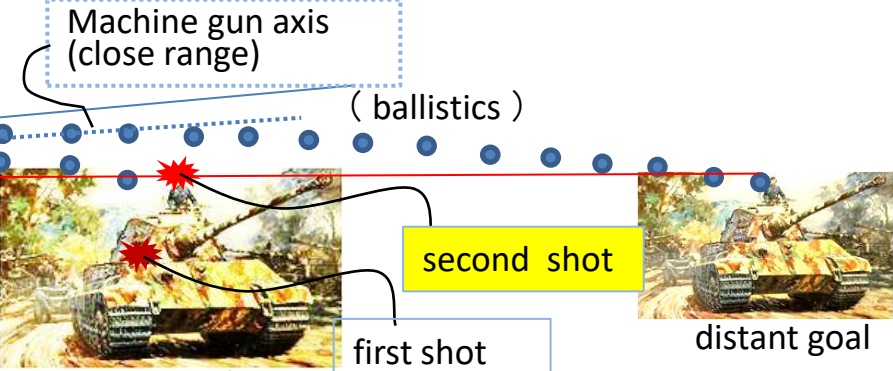


(Side view)

L超望遠鏡からの画像 R超望遠鏡からの画像



Imaging area deviation caused by inter-lens distance (D)



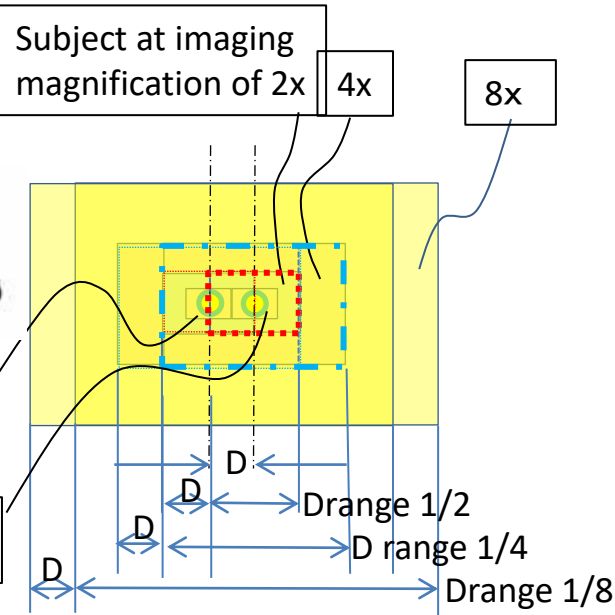
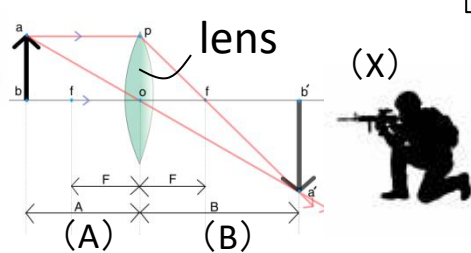
(Subject side)

(Imaging unit) Telephoto lens imaging diagram



close-up photography long distance photography

From the imaging formula of a telephoto lens, the magnification M of the subject is expressed as $M = B/A$ (from the formula of triangular similarity). (A is known and B is the desired distance)



R camera imaging range
L camera imaging range

Distance measurement method (Part 1)

If the distance between the two telephoto lenses (and camera) is D , the ratio of the size of D to be imaged (=the part imaged by one camera and not imaged by the other) is inversely proportional to the imaging magnification. Therefore, the magnification is known.

In the figure above, the range of D is $1/2$ when the subject range (= dotted line part: the image formation magnification is $2x$) is captured twice as large as the L camera imaging range. Similarly, the range of D is $1/4$ when a subject range that is 4 times larger than the imaging range of the L camera (= one-dot chain line part: imaging magnification is 4 times) is captured.

→Once the magnification is known, A is already known, so B is derived, that is, the distance to the subject is known.

Distance measurement method (Part 2)

Next, since the dimensions of the image size of the imaging unit are known, the dimensions of (Y=) Z1 and Z2 captured are also known. Also, with AI technology, it is possible to estimate the original size of X, X is known, the ratio between X and Y is known, the ratio between A and B is known, and A is known at the lens design stage. so we know B after all, i.e. we know the distance .

Equipped with a high-sensitivity color camera, it can shoot accurately even at night, making it a very scary weapon. Great war deterrence.

Assumed case in Taiwan

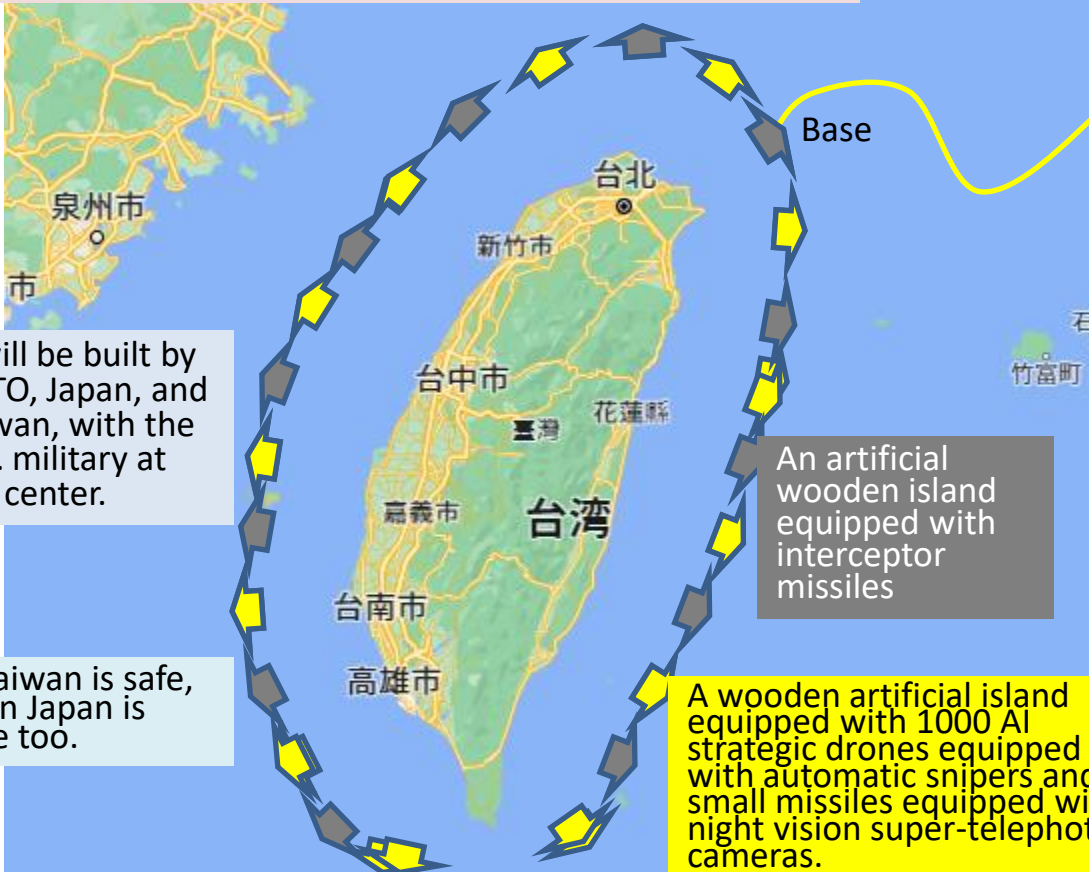
Operation Bee

Rather, it does not have the ability to preemptively strike enemy bases that are the target of preemptive strikes, and concludes a treaty that leaves retaliation to the United States and NATO, exclusively preventing "soldierboots" = "invasion of troops".

In the image of bees surrounding and killing hornets, there is a system that simultaneously attacks enemy ships from all directions, making it impossible for enemy ships to enter the territorial waters.

□ 100 x 100 12m wooden artificial islands (= 1.2km x 1.2km) are used as bases, and AI at each base is in charge of 12 teams (12 BDs as 1 team). (= 144 units)

Only when replacing the hydrogen tank, the BD returns to the base, but it usually sails, and even if the base receives a preemptive attack, most of the BD will remain, and when the AI of the original base is destroyed, it will automatically To be able to move according to instructions from the AI of other bases. (Determine in advance which AI will be in charge)



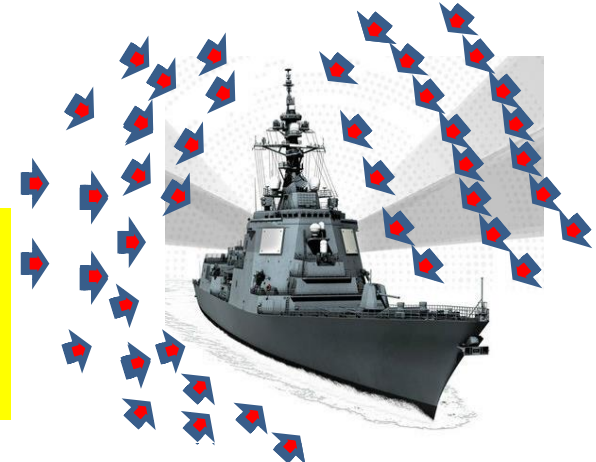
It will be built by NATO, Japan, and Taiwan, with the U.S. military at the center.

If Taiwan is safe, then Japan is safe too.

An artificial wooden island equipped with interceptor missiles

A wooden artificial island equipped with 1000 AI strategic drones equipped with automatic snipers and small missiles equipped with night vision super-telephoto cameras.

At each base, electricity is supplied by tree-type solar power generation, hydrogen tank filling, hydrogen tank exchange robots, etc. are prepared, and missile interception systems are installed to prevent missiles from being dropped on the mainland.

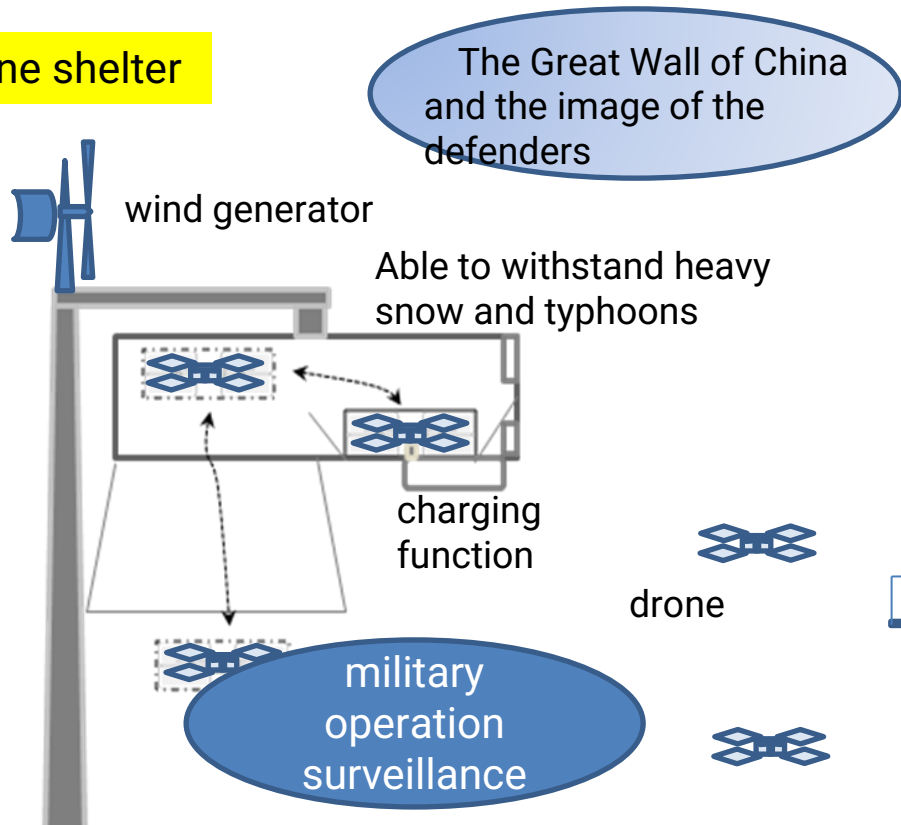


Countless strategic drones fly at once

From the perspective of preventing malfunctions, AI is in charge of monitoring, but instructions from the General Staff Headquarters are required to instruct attacks and release from automatic battle mode.

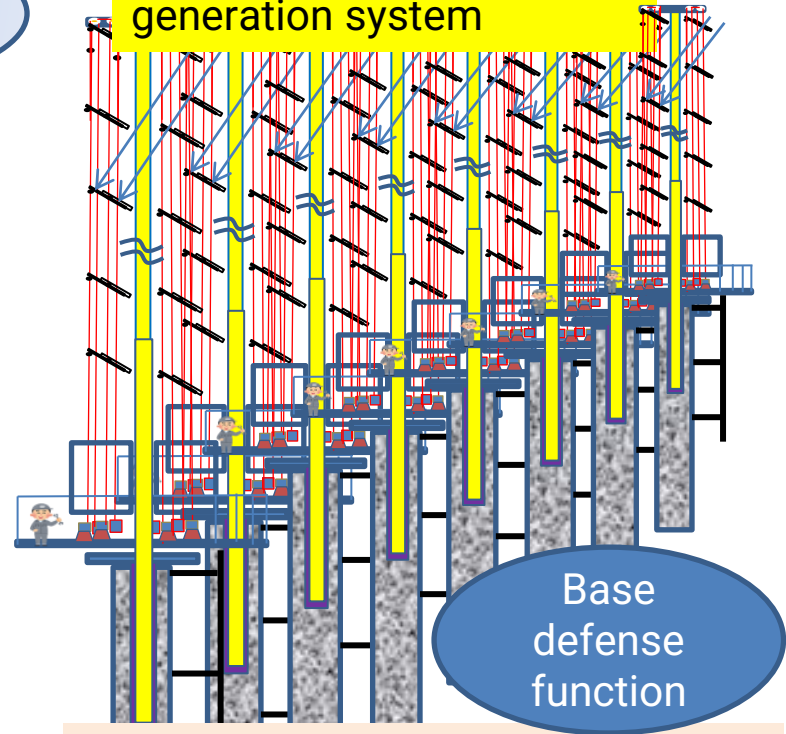
Dedicated defense system in the case of land connection

drone shelter



Drone surveillance system that operates 24 hours a day with an independent power source that uses 100% renewable energy. Equipped with an ultra-high-sensitivity color camera, it makes flights of about 15 minutes every 3 hours, 365 days a year. .

Tree type solar power generation system



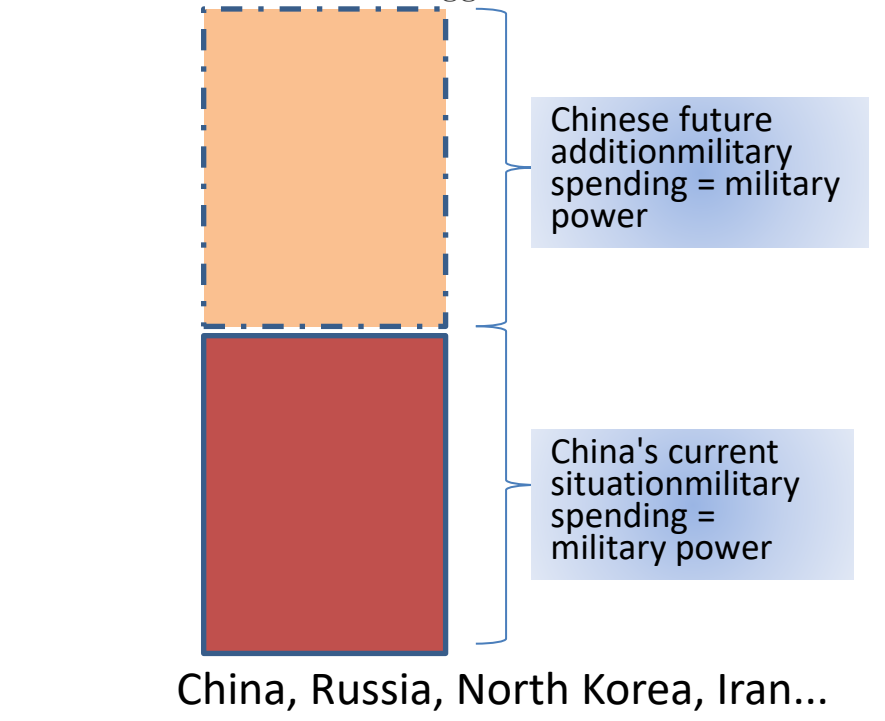
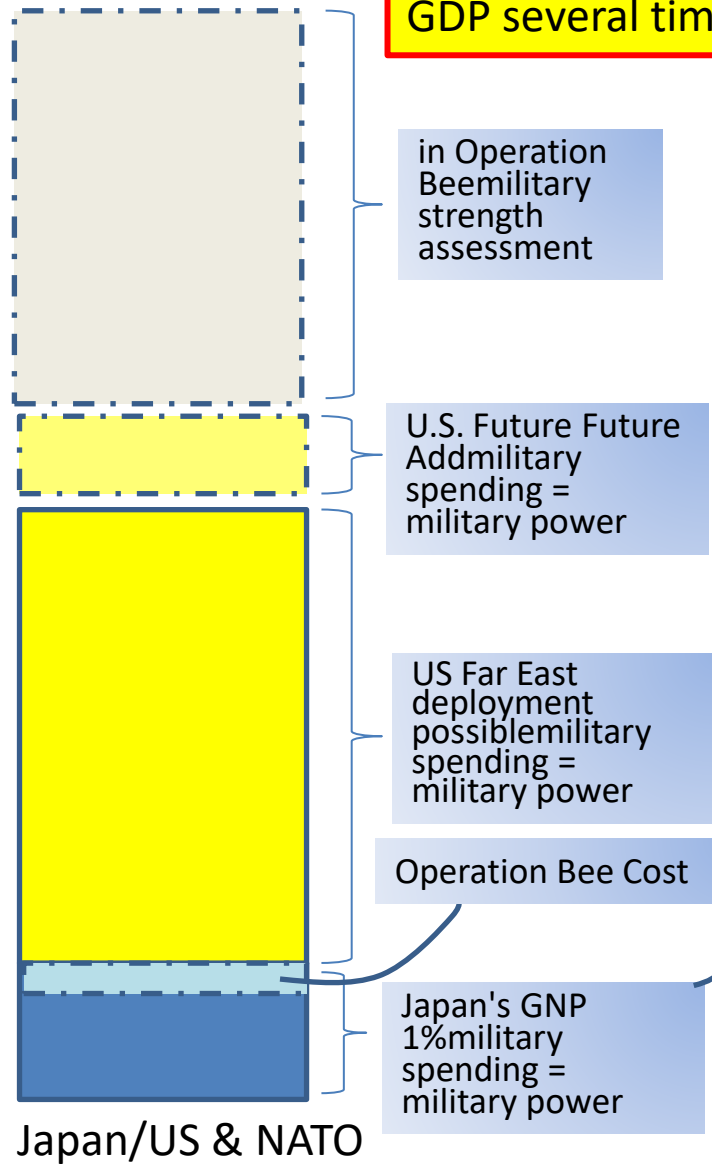
Create a tree-shaped wall to prevent military vehicles such as tanks from entering.

Nominal building a zero greenhouse gas society

Japan aims for a natural increase in military spending by gaining the upper hand with Operation Honeybee and the military power of the United States and NATO, and by doubling GDP several times through simultaneous reforms on all sides.

By multiplying GDP several times through simultaneous reforms in all directions, military spending will automatically increase several times.

Considering military power as a set of "Japan + US / NATO", Operation Honeybee will prevent China's lightning aggression. The system that "retaliation and continued support will be dealt with by the United States and NATO" dissuades China from aggression.



Military power balance image diagram

Significant reduction in personnel

Towards the age of AI drone weapons

No need for conventional weapons

Entering an era of AI technology competition



We can no longer build nuclear power plants that are prey to AI drones.

In addition to the drastic reduction of conventional weapons and military personnel, the joint development of various drones with the United States and NATO will reduce defense costs by one-third and triple the defense capability. (Operation Bee)

Automatic snipers target people in the face and crotch. Soldiers can no longer go to the front lines.

In the woods, if there are spider webs and leaves, it can move forward, and if there are tree trunks and obstacles, it can dodge at high speed. Thousands and tens of thousands of drones were launched from multiple submarines in the shadows of the night, along the road. is flying just above the ground, setting fire to all houses, and imagining a big city like Tokyo turning into a sea of flames overnight.

Troops with newer weapons in history are winning

man, bow, sword, horse

man, gun, horse, cannon

People, tanks, armored vehicles, jet planes, missiles

The operator has great responsibility
Drone speed up. Longer Flight, Intelligent, Automatic Sniper & Multifunctional

AI automatic battle mode possible type in the future

think and act for itself

Operation Bee Subsystem

+ Super large AI unmanned submarine

Commands and cancellations of attack mode are carried out by the operations headquarters (Japan, the United States and NATO).

360 degree night vision camera & communication

<Types of AI drones>

- 1. Automatic sniper mounted gun applications
- 2. bomb-mounted bombing applications
- 3. ground running type flamethrower mounted type
- 4. Ground running type & automatic sniper attached
- 5. Ground running type chainsaw included
- 6. Attached to the ground traveling type drill
- 7. Underwater drone & drill included (Drill a hole in the bottom of the ship and submerge it in water)

360 degree night vision camera & communication(sub-system)

1000 units will be in operation soon Set over 100 auto hatches. (Even if the hatch cannot be closed due to a malfunction or attack, the structure will prevent flooding from spreading to other areas.)

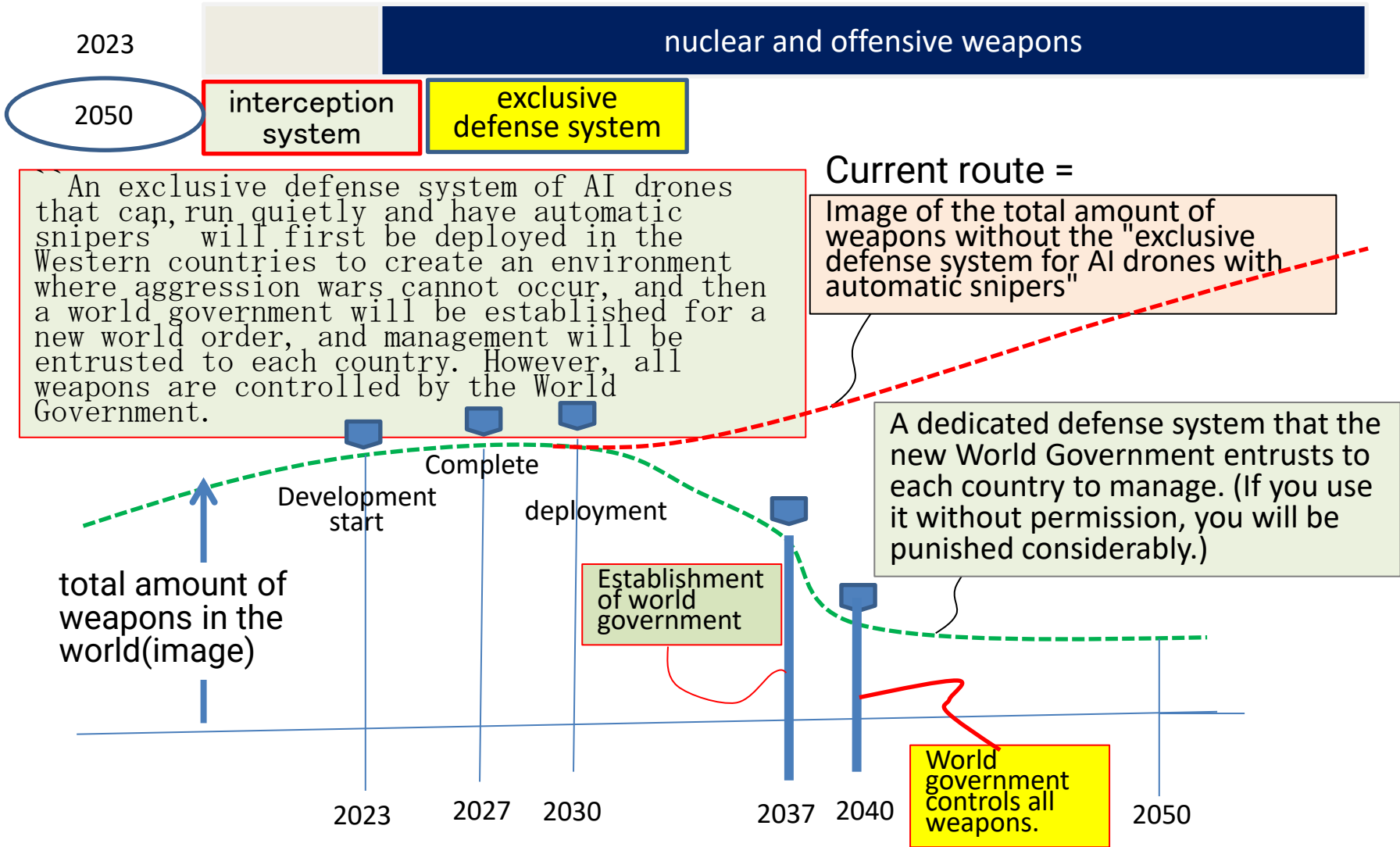
auto hatch

auto hatch

Super large AI unmanned submarine equipped with 1000 AI drones (Energy: Large hydrogen tank automatic exchange type)

(Hydrogen tanks are automatically replaced at the base station of the wooden artificial island where the tidal power generation system is installed, and maintenance and inspection of various drones are performed by the automatic system. Actual repair maintenance and replacement are performed by people.)

< Image of Weapon genre in 2050 >



An exclusive defense system of AI drones that can run quietly and have automatic snipers will first be deployed in the Western countries to create an environment where aggression wars cannot occur, and then a world government will be established for a new world order, and management will be entrusted to each country. However, all weapons are controlled by the World Government.

Current route =
Image of the total amount of weapons without the "exclusive defense system for AI drones with automatic snipers"

A dedicated defense system that the new World Government entrusts to each country to manage. (If you use it without permission, you will be punished considerably.)

World government controls all weapons.

The World Government is an extension of the United Nations, but one that controls the world's weapons and eliminates veto power.

Proposed post-war Ukrainian housing system (provided free of charge to citizens and reimbursed by an export industry protected by international patent)

<Automated care system for low-speed self-driving cars>

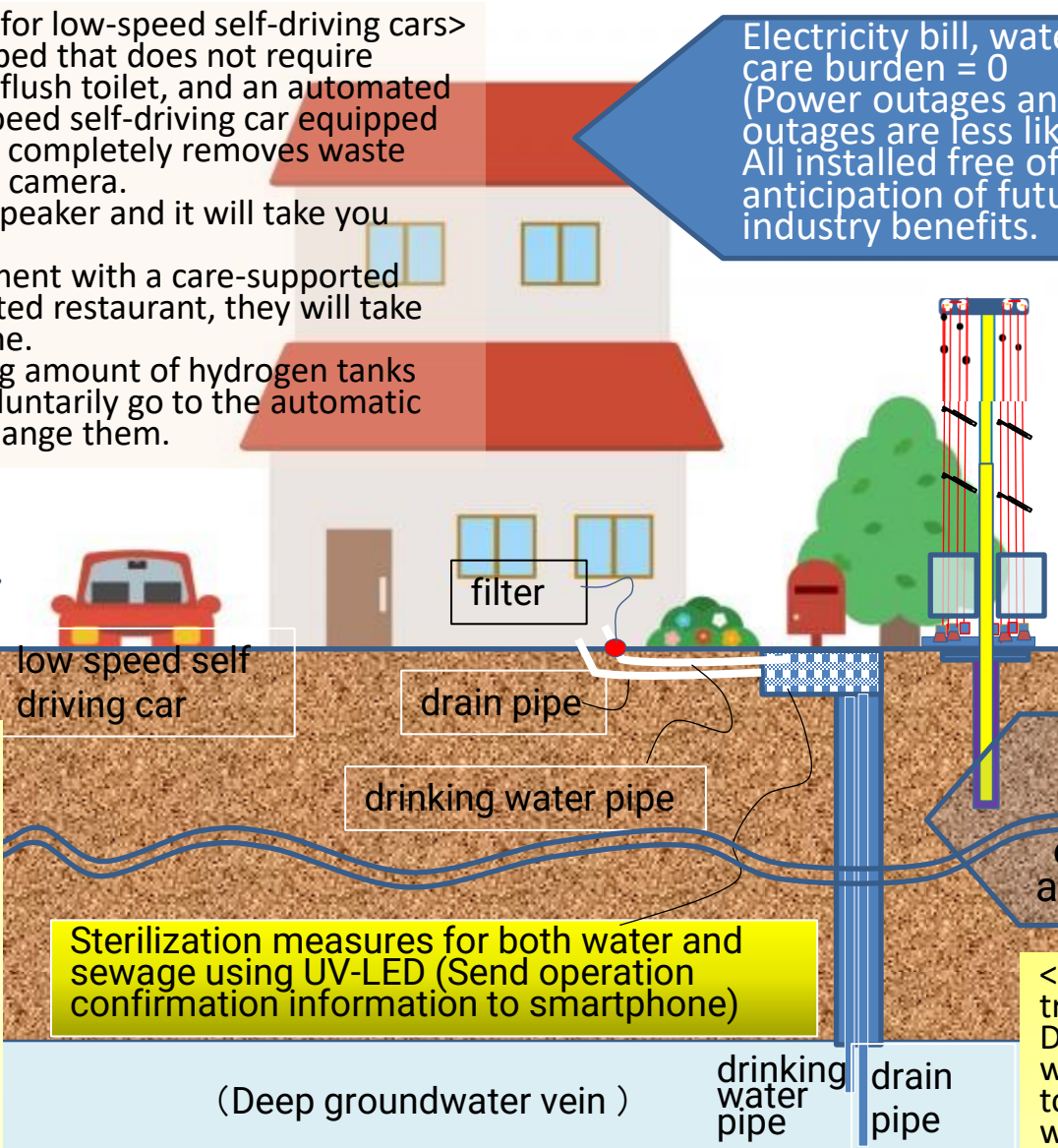
Comes with a paradise bed that does not require turning over, an odorless flush toilet, and an automated care system with a low-speed self-driving car equipped with a robot washlet that completely removes waste while checking with an AI camera. Conversation with an AI speaker and it will take you anywhere, albeit slowly. After making an appointment with a care-supported hospital or a care-supported restaurant, they will take you to the designated time. Considering the remaining amount of hydrogen tanks and large water tanks, voluntarily go to the automatic exchange house and exchange them.

Electricity bill, water bill, nursing care burden = 0
 (Power outages and water outages are less likely to occur)
 All installed free of charge in anticipation of future export industry benefits.

Protect your dignity and live happily without being a burden on your family.

Spend the nights here, and during the day go to day services or communication parks, receive simple care for elderly volunteers and high school students as extracurricular classes, and enjoy conversations.

At dinner time, go into the house and enjoy the company of the whole family.



<Tree type solar power generation device>
 By reducing the cost of digging a hole in the ground, the foundation is no longer necessary, and mass production is expected to reduce the installation cost + equipment cost = 1 million yen or less, excluding the panel.

A city that has suffered unjust destruction enjoys the most advanced system.

<Concept of wastewater treatment>
 Dilute with plenty of sea water. (Similar principle to throwing radioactive waste into the sea after sufficiently diluting it)

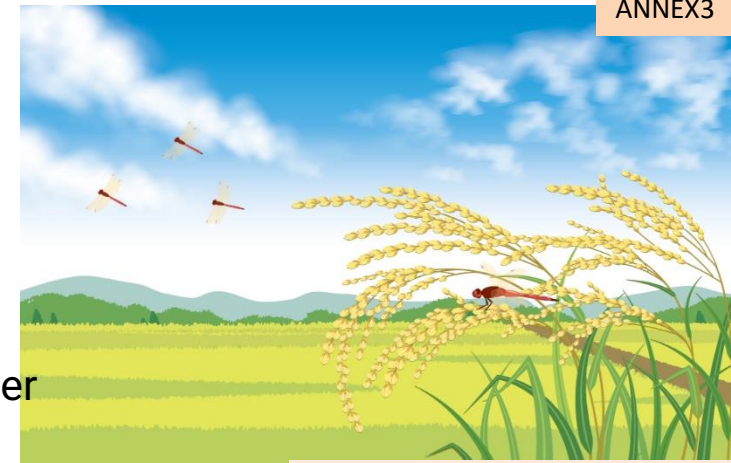
Selected Ukrainian members will develop in Japan and acquire international patents, and produce in factories in Poland, EU countries and Japan.

Proposal for Global Carbon Neutrality

First step

"Tokyo Environmental Preparatory Meeting" held by members selected from G7 + environmental activist Greta (scheduled for 3 months)

1. Official announcement of the ideal future city
2. Tidal power generation on artificial wooden islands, water current power generation, tree-shaped power generation
Global deployment simulation result report
3. Announcement of official proposals for efficient natural photosynthesis, artificial photosynthesis and CO2 reduction factories



vacations & weekends

play well and learn well

Second step

"Tokyo Environmental Development Research Conference" will be held by members selected from North America, Oceania, EU & UK, and the Far East (Japan, South Korea, Taiwan) + environmental activist Greta (scheduled for 3 years)

1. While sharing information, report on simulation results of renewable energy conversion in all regions of each country (ideal state in 2050)
2. The goal is to "achieve 25% of this system in three years" by implementing renewable energy from possible regions in each country.
3. Decide on a framework for sharing exports from each country in the future.
(Aiming for renewable energy with local production for local consumption in all regions of the world.)

play well and learn well

After 5

